

SEATTLE ROTARY  
SERVICE FOUNDATION

2022-2023

# ANNUAL REPORT 2022-2023



**PREPARED BY:  
MARY GOLDIE**





## A WORD FROM OUR PRESIDENT

The heart of Rotary resides in service and how we support our communities through time, talent, and funding. This report is the story of those efforts and reflective of our continued commitment to improving our city and the lives of its residents.

There are future professional mariners learning to be ferry engineers partially because of Seattle Rotary Service Foundation. There are young leaders of our community pursuing their college dreams because of Seattle Rotary through scholarship funding. And there are pre-schoolers exploring the environmental challenges of their local area because of the Foundation's support.

Through Shelterbox, we helped house the survivors of the earthquake in Syria and Turkey. We are working with a partner Rotary Club in Ghana to provide clean water to residents. We also provided reminders of the power of peace through peace pole placement in our local communities.

All these stories are reflective of the mission of our Foundation to serve our area through programs and projects and with international partners to extend the reach of our philanthropic efforts. We stand on over 100 years of "Service Above Self" as a legacy and proudly work to continue that effort with funding projects that reflect the challenges of today's society.

Our Foundation Board and our Club committee chairs led these efforts with energy, creativity, and enthusiasm. It has been an honor to service with them in this Foundation year.

*Sue McNab*  
**SUE MCNAB**

2022-2023 SEATTLE ROTARY  
SERVICE FOUNDATION PRESIDENT



# 2022-2023 Seattle Rotary Service Foundation Board



SUE MCNAB,  
PRESIDENT



MATT ALBERTSON



NICK ANDERSON



ALAN BERGEN



JON BRIDGE



KEVIN CRANE



ROBYN GRAD



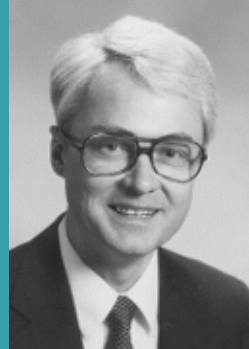
DAVE KRAFT



CANDY J. LEE



ANNA LIOTTA



DON MURPHY



LILLIAN SHERMAN



JAMES STEVENS



SARAH WEAVER



KATHY WILLIAMS



DAVID WOODWARD

# SRSF COMMUNITY IMPACT

Over the years, SRSF has provided funding for countless significant activities. Notable examples include:

- **Winners for Life**, a program of the Education Committee which honors and provides scholarships for Seattle high school students for achieving academic excellence while overcoming unimaginable odds in their quest to finish school.
- **Rotary First Harvest**, a Rotary District 5030 project, solicits large scale donations of produce from growers and packing houses.
- In 2013, SRSF provided \$100,000 in funding for the **Edward Thomas House Medical Respite** to convert existing space into exam rooms for patient care and interviews. Edward Thomas House Medical Respite provides beds for homeless men and women with complex medical needs and a high incidence of chemical dependency and/or mental health diagnoses. The grant addressed the lack of exam space which had created a bottleneck for patients accessing nursing care. The grant also met the need for a safe, private, and secure place for patients to meet with mental health care providers. The funds will also created additional refrigerator space to keep intravenous medications and immunizations, as well as making it possible to perform point of care testing on site, rather than having to send patients to other lab facilities for simple diagnostic tests.
- In 1994, Rotary contributed \$500,000 to help the **Woodland Park Zoo** carry out its vision of promoting lifelong learning about conservation of wildlife and preservation of natural habitats. The result is the Seattle Rotary Education Center, which enabled the Zoo to expand its hands-on, living laboratory with a new 14,000-square-foot education facility. The Center is a major asset as Woodland Park Zoo makes “education” come alive for more than one million visitors a year.
- In 1971 the club not only bought a fully-equipped Medic I vehicle, but also financed a three-year CPR training program and a training film that was shown in cities around the world where similar programs were being considered. Largely because of **Medic I**, Seattle is often called “the best place in the world to have a heart attack” – thanks in large part to the role Seattle Rotary played in breathing life into this innovative program nearly 50 years ago.
- In 1983, **KCTS-TV Channel 9**, had outgrown its crowded quarters on the University of Washington campus and was about to launch its first-ever capital campaign to build a state-of-the-art facility independent of the University. It was a good cause: a valued community service that brought information, education, and entertainment to millions of viewers, 24 hours a day, 365 days a year. Rotary could make a huge contribution by spearheading the campaign! Originally a goal of \$2 million was set, with \$750,000 targeted to come from Rotarians. As the campaign gained momentum, it ultimately topped \$3 million – with \$1 million coming from Rotarians and another million contributed by their companies!
- During our Centennial year in 2009, our club raised over \$4 million for **Wellspring Family Services** to build the Rotary Support Center for Families. Rotarians made five-year pledges toward this milestone project that enabled Wellspring Family Services to add depth and breadth to programs they currently offer and consider new options to meet emerging needs.
- In 1944, Seattle’s Rotary Youth Foundation embarked on its first major project, one that is still a source of Rotary involvement and pride 65 years later. In the beginning, it was called the George Colman Boys Club and was located in the basement of Plymouth Congregational Church where it served 300 boys. It is now the Rotary Boys & Girls Club.



## ARTS COMMITTEE

**\$15,000**

JEFF PARKER, CHAIR

The Arts Committee received \$15,000 in grants in the 2022/2023 Rotary year, with \$10,000 going to Cultivate South Park and \$5,000 in support of Music4Life.

Support for Music4Life from SRSF and others led to the delivery of 1,629 musical instruments to 11 participating school districts since September 1, 2022.

Intended for use by students of income-qualified households, each instrument must be returned when the student leaves the school district so it can be utilized by another student in need.



## ROTARY BUSINESS MENTORS PROGRAM



## BUSINESS MENTORS

# \$10,000

PAUL TSAI AND TERRY VAN NOSTRAND, CO-CHAIRS

In 2022-23, 14 Rotarians and 40 professionals coached 78 students through consulting projects for 16 companies in underserved communities. This provided firms strategies to improve their competitiveness, grow revenues and jobs. Rotarians then coach the business owners through implementing the recommendations of their students.

Since 1995, this has led to more than \$250 million in new revenues and 250,000 new jobs. Students attended Rotary Day on 2/1 where they learned about Seattle 4 and its mission.

Rotary 4 awarded \$500 scholarships to four students who've demonstrated exemplary performance in team leadership, cross-cultural communications, and the application of business strategies for their clients.

Project partners include Rotary &

- UW Consulting and Business Development Center, Foster School of Business – The Consulting Center administers the program each year.
- Accenture – Provides training for the student consultants and other professional advisor volunteers.
- KeyBank – Provides financial advisors who help students analyze their client's financial health and produce financial projections.



## EDUCATION COMMITTEE

**\$33,600**

DR. YVONNE RICHARDS & LORI WALKER,  
CO-CHAIRS

The Education Committee was awarded \$33,600 in support of the United Negro College Fund (UNCF) for their Seattle Rotary Scholarship & Mentoring Partnership.

The funds were used to facilitate sessions by experts on topics such as preparing college essays, completing scholarship applications, helping students decide their top colleges of interest, preparing for the SATs, obtaining transcripts, developing CVs, and attaining letters of recommendation.

Each student makes a presentation of their college plans, goals, and the contents of their portfolio. Then, the students are paired with mentors to assist them in completing their final presentation and portfolio. The student-mentor relationship is an essential part of the program. This is where you really see the growth in the students over the 11 weeks and their transformation from being unsure about whether they can get everything done to confident young people on their way to college. It is a proud moment for students and mentors. This partnership is an important education and social justice commitment.



## Scholarship Recipients:



Isaiah Elegan  
Hampton University



Cierra Wright



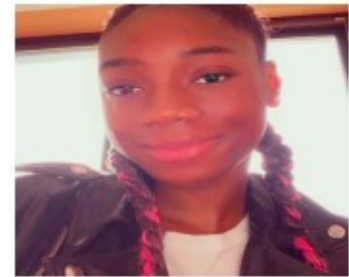
Fitzgerald REDD Beaver-Ford  
Morehouse College



Jada Simone Yamashita  
Spelman College (freshman)



Tyra Victoria Griffin  
Clark College



Takiyah Blue  
Central University



Devaughn Brewer  
Clark College



Nailah Saquee  
University of Washington



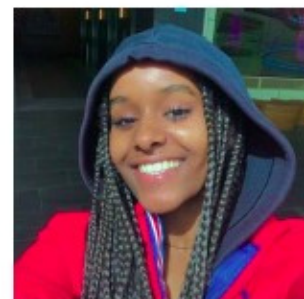
Elroe Nure Yayiso  
University of WA (Sophomore)



Sa'Maiah McDaniel  
Clark College



Elisabeth Assaye NY Institute of  
Technology (Sophomore)



Kissehanet Tesfa University of  
Washington (Sophomore)





## ENVIRONMENTAL SUSTAINABILITY COMMITTEE

**\$13,706**

ERIC CHRISTENSEN, CHAIR

The Environmental Sustainability Committee was awarded \$13,706 in grants in support of ECOS and Tiny Trees Preschool.

\$5,000 was awarded to ECOS. ECOS brought together various migrant and refugee communities to continue restoration efforts in Seward Park. For their 2022 fall event, forty members from across East African, Latinx, and Asian communities came together to plant 135 native plants representing 14 species.

Not only do these plants help support the ecosystems of Seward Park, many also have cultural ties to the community participants. This sense of belonging is crucial for a field that has typically been difficult for people of color to access.



# HARVEST AGAINST HUNGER

## \$15,000

SRSF's annual support of Harvest Against Hunger (HAH) helped the organization continue its mission to work with farmers, small-scale growers, trucking companies, and hunger relief organizations throughout Washington state to provide healthy fruits and vegetables to families experiencing hunger. The organization reports that nearly 2 million people in the state of Washington today face food security issues.

Donations to HAH have a ripple effect as they help bring nutritious foods into the pipeline in a variety of ways by working with producers AND distributors to bring healthy, fresh, and nonprocessed foods to families in need.



## INTERNATIONAL SERVICE COMMITTEE

**\$59,265**

ALICIA FLATT & FRANCES WALKER, CO-CHAIRS

**Best Future/Nakivale Refugee Camp** Grant funds will be used to provide training and resources to ensure clean drinking water and improve public health in this Ugandan refugee camp.

**Imagine Scholar** Support funds to Imagine Scholar help this South African organization to provide campus-based intensive learning programs for around 1,030 students annually.

**Kumasi Ghana Water Project** In conjunction with the Kumasi Rotary Club of Ghana, grant funds will be used to ensure clean drinking water and support for public health measures to ensure local communities have access to potable water.





## INTERNATIONAL SERVICE COMMITTEE

**\$59,265**

ALICIA FLATT & FRANCES WALKER, CO-CHAIRS

**Malaria Nigeria Project** Currently under review as part of a global grant from The Rotary Foundation.

**Save the Silent World** Grant funds were used to purchase infant hearing screening equipment and expand newborn hearing screening into two maternity hospitals outside of the Mongolian capital of Ulaanbaatar.

**Uganda Malaria Project** In two Ugandan districts, funds were used to train and equip Village Health Teams, expanding local health care access in rural regions.



# MALARIA PARTNERS INTERNATIONAL

**\$228,250**

The program will train and equip 1,700 Village Health Team members and develop the public health system's capacity to conduct ongoing supervision of service levels and data reporting. Integrated Community Case Management seeks to expand health care access and provide for ongoing rapid diagnosis and treatment for malaria through well-trained cadres of community-based health volunteers.

This project builds on the successful experience of two previous Global Grants in the region and learnings from Rotary's first Programs of Scale in Zambia.

The overall project budget is \$1.2 million. The Rotary commitment of \$400,000 was successfully secured from a diverse range of funders including 60 Rotary clubs, 6 Districts, the Rotary Foundation, and Malaria Partners International. This was the first malaria related Global Grant that several of the districts and clubs have supported. Malaria Partners International played a significant and critical role in leveraging funds to allow implementation to begin in a timely manner. The Rotary funds were matched by the Bill & Melinda Gates Foundation and World



## ROTARY MARINERS

## \$10,000

ALAN BERGEN, CHAIR

Funds were used to support the inaugural year of Maritime High School's Mentorship Program including: staff time to plan and implement the program; culturally informed and centered mentor training implemented by Sea Potential; 3 mentorship breakfasts throughout the year, the final of which will be held on May 31. This last breakfast will be a larger celebration of the accomplishments of the program's first year.

This program served 36 MHS 10th graders and 33 mentors. We extended an invitation to 5 Rotarians to join us for this last breakfast and we look forward to Alan Bergen joining us for the year end celebration!

Maritime High School is the result of a core partnership between Northwest Maritime Center, Highline Public Schools, and the Port of Seattle. For the Mentorship Program, we partnered with Sea Potential to implement culturally informed, sensitive, and significant mentor training.





## PEACEBUILDERS COMMITTEE

**\$23,729**

MIKE HATZENBELER, CHAIR

**Peace Poles** The Detective Cookie Chess Park was dedicated and open for chess play on September 24, 2022. SRSF funds were used to purchase a set of large chess pieces displayed on a giant chess board in the center of the park. SRSF funds have also been used to support the Chess Club, which will hold tournaments at the park involving children from the surrounding Rainier Valley community.

**Rotary Peace Centers** In 2022-2023 Seattle #4's contribution to Rotary's eight Peace Centers supported the peace education of 50 Masters degree candidates and 80 certificate recipients. These Rotary Peace Fellows are experienced peace and development professionals with diverse backgrounds who gain practical skills to promote peace and reconciliation within their communities and across the globe.



## ROTARY BOYS & GIRLS CLUB

**\$40,500**

JARED GROSE & JON ZETLMAIER, CO-CHAIRS

**Healthy Food Program** SRSF funds are used to support Rotary Boys & Girls Club's healthy food program, which served 9,800 meals to school kids in 2022-2023. Meals are prepared at the Rainier Vista Club by Nutrition Coordinator Patrice Freeman to include a balance of healthy whole grains, fruits, and vegetables essential to healthy growth for children.

**Scholarships** Two students, Keymani Washington and Lucy Richardson, received scholarships in support of their higher education goals. Washington attends Claremont McKenna College and Richardson attends the University of Washington.

**Virtual Reality Equipment** Grant funds purchased three Meta Quest and two Virtual Reality headsets to expand programming opportunities for Rotary Boys & Girls Club kids.



## ROTARACT

**\$750**

SUE NIXON, CHAIR

Seattle City Rotaract is made up of young professionals ages 21-30 in the Seattle Metro area who are interested in leadership, professional development, community service, and having fun.

SRSF funds were utilized to support Seattle City Rotaract representation at the Big West Zone Institute in Salt Lake City, an event for regional Rotary leaders that provides training and connection for Rotary clubs in the western part of the United States.





## SEQUIM ROTARY YOUTH LUNCHES

**\$440**

SRSF grant funds were utilized to bring Sequim area students in Interact to a Rotary Club of Seattle meeting, where a check was given in support of the Joe Rantz Rotary Youth Fund.

Almost 40 Sequim Interact and Sequim Rotary members attended the May 17, 2023 Rotary Club of Seattle meeting for a funding announcement and check presentation.



## SHELTERBOX

**\$15,000**

When a devastating 7.8 magnitude earthquake hit Syria and Turkey on February 6, 2023, SRSF quickly activated to provide \$15,000 in funds to ShelterBox, an international relief organization that focuses on providing emergency shelter and other aid items to communities impacted by conflict and natural disasters.

Due to the size of the donation, ShelterBox bestowed the Rotary Club of Seattle with its prestigious HERO award. ShelterBox is also a Rotary International partner.

**SEATTLE ROTARY SERVICE FOUNDATION**  
**Available Funds & Distributions**  
**July 2022 - June 2023**

	<u>Total</u>
<b>Income</b>	
<b>Unrestricted Income &amp; Funds Released from Investments</b>	
<i>Member Donations</i>	203,506.00
<i>Non Member Donations</i>	10,945.97
<i>Dunn Trust Endowment Donation</i>	100,000.00
<i>4% of Investments Annual Release of Funds</i>	42,969.00
<b>Total Unrestricted Income &amp; Funds Released from Investments</b>	357,421
<b>Restricted (Year-Marked) Income</b>	
<i>Year Marked Contributions - From Members &amp; Other Organizations</i>	1,000
<i>Rotary Boys &amp; Girls Club - Annual Release from Investments</i>	14,950
<i>Bakken Scholarships - Annual Release from Investments</i>	5,600
<i>Gates Foundation Matching for Rotary Malaria Partners Projects</i>	228,288
<b>Total Restricted (Year-Marked) Income</b>	249,838
<b>Total Income</b>	<b>607,259</b>
<b>Expenses</b>	
<b>Administratiton Costs</b>	32,153
<b>Grants Distributed in 2020-21</b>	455,240
<b>Total Expenses</b>	<b>487,393</b>



# SEATTLE ROTARY SERVICE FOUNDATION

## Assets & Liabilities

As of June 30, 2023

	<u>Total</u>
<b>ASSETS</b>	
<b>Current Assets</b>	
<b>Bank Funds</b>	211,324
<b>Temp. Restricted Investment Accounts</b>	
<i>For SRSF income - 4% Annual Distributions Unrestricted</i>	322,466
<i>For Large Projects</i>	15,924
<i>For two Bakken Scholarships</i>	56,253
<i>For Steve Crane Memorial Rotoract Scholarships - \$750 annually</i>	10,632
<i>For CK Holmes, Jr. - 4% Annual Distributions Unrestricted</i>	247,638
<i>For Art Mazzola Memorial - 4% Annual Distributions Unrestricted</i>	298,861
<b>Perm. Restricted Investment Accounts</b>	
<i>Legacy - Seattle4ever Endowment - 4% Annual Distributions Unrestricted</i>	182,282
<i>O'Neil Fund for Rotary Boys &amp; Girls Club (RBGC) Expenses</i>	115,922
<i>RB&amp;GC Fund for RB&amp;GC General Expenses</i>	250,498
<b>Other Assets</b>	
<i>RB&amp;GC Property at Cost (2020 Assessed Value \$3.1 million)</i>	178,103
<b>TOTAL ASSETS</b>	1,889,903
<b>LIABILITIES</b>	0

# PINKHAM & SKEEL CIRCLE

## OF SERVICE DONORS

THANK YOU FOR YOUR GENEROUS DONATION OF \$1,000 OR MORE TO THE SEATTLE ROTARY SERVICE  
FOUNDATION

LINDA S. CHEEVER  
LIVINGSTON WERNECKE  
ROBERTA L. GREER  
JOHN D. DURBIN  
ROBERT L. CALHOUN  
DONALD J. MURPHY  
JOHN S. ADAMS  
SARAH WEAVER  
WALLY W. KEGEL  
BOB ALEXANDER  
LEN CEREGHINO  
CANDY J. LEE  
BILL CENTER  
CYNTHIA CHIROT  
JAY BOND  
JENNI COX  
JIM DUNCAN  
JOEL H. FERRELL  
JOHN W. ELLIS  
KARL EGE  
KEVIN CRANE

DAVID G. KELLY  
DOMINIK MUSAFIA  
DONALD ROOT  
DOUGLAS W. SETO  
FEDVA S. DIKMEN  
FRED GRIMM  
HEATHER L. FITZPATRICK  
J. STEN CRISSEY  
JACK P. LAUDERBAUGH  
JAMES R. MOORE  
JAMES R. ODOM  
JAMES W. MCCURDY  
JANN GREENE  
KIRK P. GREENE  
LAUREL A. JAMES  
LINDA D. WALTON  
LISA D. MAYFIELD  
LOUIS M. LUNDQUIST  
MARY JOHNSTONE  
NANCY OSBORNE  
NEIL L. MCREYNOLDS

PAULA L. HOUSTON  
RICH LACHER  
ROBERT E. JOHNSON  
STEPHEN J. SUNDQUIST  
SUE NIXON  
THOMAS F. HERCHE  
TRACY GARLAND  
VICKI OXLEY  
WILLIAM S. FETTERLY

# PRESIDENT'S CIRCLE OF DONORS

THANK YOU FOR YOUR GENEROUS DONATION OF \$2,500 OR MORE TO THE SEATTLE ROTARY SERVICE  
FOUNDATION

CHARLEY DICKEY

KATHY A. WILLIAMS

CARL G. BEHNKE

ANI BLACK

DAVID KRAFT

SUSAN MCNAB

JON BRIDGE

HARRY SHORT

NANCY CAHILL

MARLI A. IVERSON

JEFFREY B. PYATT

ALICIA FLATT

BURR STEWART

CHRISTOPHER L. CLARK

DOROTHY C. BULLITT

ERIC CHRISTENSEN

JAMES M. COLLINS

JAN LEVY

MADELYN L. LINDSAY

RONALD E. BAYLEY

THOMAS W. MESAROS

JEFFREY T. BOREK